

## Trustee News

### Lagoons

A reminder to all dog owners that we have had to put some chemicals in the lagoons to stop the spread of Algae forming. Unfortunately, both the Algae and the chemicals used to destroy it are harmful to Dogs. Please ensure that you don't let your dog enter any of the lagoons whilst the chemicals are being used.

Notices are displayed around the lagoons which are being treated.

### Children's Christmas Party

The children's Christmas party is provisionally booked for Sunday December 13 and more volunteers are needed to run this very successful and enjoyable event. If you can help in any way please leave your name at Reception

### DP Website

Thank you to all those residents who have registered their email address on the new website. The deadline for registering has now passed. All future communications will be sent to the email addresses derived from the website.

If you think you have registered but are not receiving any communications then please send an email to:  
[office@delamerepark.co.uk](mailto:office@delamerepark.co.uk)

### The Lodge

Please note that the Lodge will be used all day as a Polling Station for the elections on May 7 so will be unavailable for use.

### Dog Mess

A plea from the Trustees.....

We all appreciate what a lovely area the green and other areas around Delamere Park are for exercising your dogs but please, please, please clear up after them. We appear to have a repeat offender who is leaving large piles of dog mess on the park and relying on other dog owners to clear up after them. Not only is this unpleasant, but is also a serious health risk should any child come into contact with it. Click on this link to see the disastrous effects dog mess can have on a child.

[http://dogfoulingandredrubberbands.blogspot.co.uk/2010\\_09\\_01\\_archive.html#sthash.A0qFLgG5.dpuf](http://dogfoulingandredrubberbands.blogspot.co.uk/2010_09_01_archive.html#sthash.A0qFLgG5.dpuf)

We have put up numerous signs around the park and the doggy bag dispenser has been refilled so please use it. If you do get caught unawares without a bag then please ask at reception, or alternatively I am sure one of our neighbours would not mind you knocking on their door for a carrier bag to clean up after your dog. Should any resident witness someone not cleaning up after their dog then please report them to reception and the relevant authorities will be informed. Don't let other dog owners take the hit, please clean up your dog's .... mess!



### Grass Verges

Whilst not a widespread problem, can we please ask Plot-holders to avoid damaging the estates grass verges by parking their private vehicles on them. This also applies to any contractors undertaking works on their behalf, and not park or store materials unless the verge is protected.

This will alleviate the need to repair or replace damaged areas of grass, which otherwise the resident will be expected to make good at their own cost.

## Trustee News

### Tree Maintenance

Following a routine inspection of trees in the Park area, a small number require treatment or felling. Whilst some of these are Silver Birch, a need exists to fell a large & old Sycamore located on the Park green running adjacent to Denehurst Park Way.

Whilst outwardly, the tree looks no different to others aligning that route, inspection has revealed extensive rot affecting the tree core and at its base. In addition the tree is inclined towards the roadway. On the grounds of safety, there is little alternative other than make immediate arrangements to fell the tree.

The Estates Team will arrange for this work, and then look towards the trees replacement during the next planting season for a suitable established sapling to be planted in the same area as that of the felled tree.

### Wood Stove Chimneys

The 'Wood Stove Chimney Epidemic' continues with plot-owners forgetting or failing to make Trustees aware of their intentions and obtaining the necessary permission in advance of works proceeding.

In addition, owners should be aware of the different types, colours and finishes available to the external flue / which can sometimes be considered visually intrusive and less than aesthetically pleasing to the homeowner or their neighbours when installed !

It is possible to specify a dark finish to the flue stack and not automatically agree to the chrome finish which can appear very industrial and out of character with the property. Equally, a brick built chimney / flue may be a possible alternative. These could be discussed with your installer / contractor at the time you are considering any changes.

It would be preferable for the plot-holder to explore such options before committing, rather than be shocked with the eventual flue appearance or finish, and when it might be too late or costly to change your mind

In the meantime, please remember to notify the Estates Team / Trustees **BEFORE** any work is undertaken to obtain the necessary approval.

### Newsletter — The Future

**WE WANT TO  
HEAR FROM  
YOU!**



In the last issue we announced that the current Newsletter Editor wished to step aside and so we asked for volunteers to take on this role. Disappointingly nobody has come forward to assume responsibility. This role is not onerous currently taking only 8-12 hours on a bi-monthly basis.

This lack of response has lead to a review of the content and frequency of the Newsletter. This and future editions will concentrate more on news with the static information e.g. calendars, contacts and club details being made available on the website and on hard copy displayed in the clubhouse. Future Newsletters are likely to be issued on a quarterly basis. Despite these changes we still need residents to become involved in Newsletter production. If you are interested or have any comments please email [news@delamerepark.co.uk](mailto:news@delamerepark.co.uk)

## General News

### Party On The Park — July 11

There will be a Party on the Park in the summer on Saturday July 11 between 14:00 and 22:00. This will include stalls run by the various community groups, Delamere Park Singers will entertain during the afternoon and 'Reverse Gear', your local Residents Band, will perform in the evening. Afternoon tea will be served by members of the Ladies club. As always, we hope to have plenty of gazebos in place and the sun will shine. More information to follow. Look out for flyers, notices and the next edition of the Newsletter.

### Garden Safari

Every year our Garden Club have a Garden Safari and the proceeds raised are then passed on to a charity. The choice of charity is decided by the residents who open their garden. The Garden Club usually add to the amount raised to make a rounded up figure.

To do this we need Delamere Park residents who are willing to open their gardens to enable fellow residents to view them during a Sunday afternoon between 1.30 & 4.30pm. This year the date for this will be July 5. After the closing time for visiting all those who have opened their gardens enjoy light refreshments in the clubhouse in appreciation of their help & following this they can then if they wish visit all the other gardens opened free of charge. At the moment we only have two or three residents who are willing to open their gardens where we need six or seven to make the event worthwhile. If of interest please contact any committee member listed below (or call Mike McNeal on 882754 ) for more details. Thanking you in appreciation of your support.

Mike McNeal, June /Brian Hoyland, Elizabeth Hill, Iris Lyon, Pat Sweetingham, Isobel Nicholson, Derek Darwent, Dave Cooper Graeme Souter

### Delamere Spartans

Delamere Spartans, a local running club with connections to the Park, are organising a 10k trail race in Manley on Bank Holiday Monday May 4. Full details of the club and this race can be found at:

<http://www.delamerespartans.org.uk/ten-thousand>

### Delamere Park Pals

If you live alone and would like to enhance your social life then this is the group for you. We have more than 20 members (male and female) and have been in existence for more than two years. There are no costs involved in joining. We usually meet on the last Thursday each month, at 7.00 p.m. in the bar at the clubhouse or, occasionally, in members' homes.

**Sunday April 19 at 15:15** - boat trip from The Mill, Chester, and afternoon tea. £12.00 (£5 deposit needed asap). Please contact Janet (889305) if you are interested.

Other suggestions:

- Visit to Gladstone Library, Hawarden.
- Bluebell walks at Arley.
- Valuation Day at Cuddington & Sandiway VH (VR Lions)
- Comedy evening (28 March) at DP
- Summer lunch at member's home
- BBQ at member's home.

Other ideas/suggestions always welcome.

For more info please contact Christine (301699), Pam (889665) or Barbara (882533)

### Next Edition of the Newsletter is June 2015

Deadline for receipt of contributions is May 15 2015

These should be sent to [news@delamerepark.co.uk](mailto:news@delamerepark.co.uk) or left at Reception

# General News

## Delamere Park Youth Club

We will have a 3 week break over Easter and return on Friday April 24. The planned events for next term are as follows:

<b>April 24</b>	Board Games Night	Bring along your favourite board games to play and if you donate them to DPYC you'll get free entry for 3 weeks!
<b>May 1</b>	Paper Aeroplane Making	Prizes for best design and longest distance travelled.
<b>May 8</b>	Bush Tucker Trial	Are you brave enough to eat blindfold?
<b>May 15</b>	Rocket Launching	Yes, you read correctly – bring your goggles!
<b>May 22</b>	Foot/Hand Tennis	Weather permitting we'll be trying some new sports on the tennis courts!

In addition to the above events on Friday evenings there will also be an Annual Open General Meeting of the DPYC Management Committee in the Lodge at 7.00pm on Monday May 11. If you have any questions or suggestion to improve DPYC for the young people in Delamere Park we encourage you to attend this meeting and get involved. We are always in need of additional helpers (particularly parents of those attending) or donations of suitable 'retired' games/equipment. Finally, if you have an interest or hobby that you think might be suitable to turn into a DPYC event then please contact us on:

[youthclub@delamerepark.co.uk](mailto:youthclub@delamerepark.co.uk) and we can work this out. The recent suggestion of a 'Smart Device Help Night', which DPYC hosted and will surely be repeated, was a recent example of such a suggestion turned into reality for the benefit of all.

## Concert Outings

Our second trip of the Season to the Liverpool Philharmonic was on Saturday February 14. The "Valentine's Day Concert" was enjoyed by all. Our third trip is on Thursday April 16, "Pictures from an Exhibition". There are no spaces available on this trip, but please contact Paul or Maria (889728) if you would like to be added to our list for information about future trips.

## Community Groups Coffee Mornings

Thanks to the Gardening Club and Water Aerobics for hosting the February and March Coffee Mornings. We had a very good attendance for both, and would always welcome new attendees.

The following Groups have kindly agreed to host our next Coffee Mornings :

Thursday May 7 – 39/45 Club  
Thursday June 4 – Adult Swimming

Do come and join us from 10.30 to 12.00 noon, either for a few minutes or for the whole hour and a half.

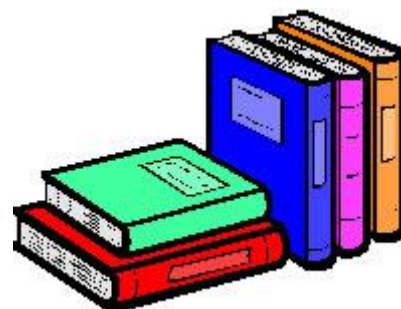
For further information, ring Maria on 889728.

## Book Club

This club has been meeting since the Spring of 2008. Since then we have read well over 50 books across a wide range of genres.

The main reason for the club's existence is to encourage those who read already to try new authors and genres and to encourage those who don't usually get the chance to read to dip their toe in the water with a group of friendly and enthusiastic readers. We meet usually every 4/5 weeks on a Thursday evening and whilst we all take reading seriously our meetings to discuss the books are not at all studious or stuffy.

Why not give us a try, please contact Alan Shaw on 01606 881771 for more details.



# Village News

## Parish Councillor

Are you interested in becoming a Parish Councillor? Elections are due to take place on Thursday May 7 2015. Cheshire West and Chester Councils Democratic Services can provide nomination packs. Nomination forms must be returned to the Council by 16:00 on Thursday April 9 2015.

Nomination papers are available from Gina Jones, CWAC Council, Democratic and Electoral Officer, email [Gina.Jones@cheshirewestandchester.gov.uk](mailto:Gina.Jones@cheshirewestandchester.gov.uk) or telephone 01244 977075.

## Village Plan – Calling all Artists

Do you have a painting or drawing of any heritage buildings, village life, or village scenes relating to Cuddington, Delamere Park or Sandiway? Do you think you could produce one over the next few weeks?

We would like an attractive front cover for the Village Plan and perhaps suitable illustrations for the different sections. The Village Plan will be printed during the summer and delivered to every home in the village.

If you wish to volunteer a sketch, picture, or montage **by April 30** we will select the most suitable to be used. Please contact us for full details on: 01606 888015 or Mobiles: 07979802465 and 07740447982

## Cuddington and Sandiway Gala Day - June 13

Time to start planning for the big day. Selections for our 2015 Community Queen, Princess, Prince and Retinue will take place on Sunday April 26 at the Village Hall, Norley Road. 13.30pm registration for 14:00 start. Smart day wear to be worn. £1 fee for children entering the selection. Entrants must be 12 or under, live in the village or attend one of our schools and be available for the Parade and Crowning ceremony on Gala Day. Further information from Jan on 01606 301579

Build a scarecrow on this year's theme of Animals. Fun for all the family. There will again be two categories, HOUSEHOLD for families and ORGANISATIONS which could be a business, charity or other village group. Pick up an information sheet from the library or email the address below. Scarecrows should be registered and displayed by June 1 when judging will commence. Lets beat last years entry total of 15.

For more information on any of the above, or to enter an event, please email; [galaday@outlook.com](mailto:galaday@outlook.com) or leave your details at the Sandiway library.

## Eden Grange Housing Estate

You will recall in the February Newsletter we reported that the Parish Council has been made aware that a route onto the Eden Grange site from Cuddington Lane which was being used by construction vehicles has now been re-surfaced and has the appearance of a proper road.

CWAC's planning department have now issued an enforcement notice on the developers to remove this access. Full details can be found on the council website: <http://www.cheshirewestandchester.gov.uk/pdf/14-00812-EOPDEC-readable.pdf>

## Sandiway Pantomime Group

Would like to thank everybody who supported their recent performances of Robin Hood. Thanks to your generosity, they have been able to donate £500 to each of the chosen charities - Oxfam, Mid Cheshire Hospital Trust Ray of Hope and Prostate Cancer Support North West.

## Meet your local PCSO

On Saturday April 25 between 10:00 and Noon meet with our PCSO, Ryan Reid, Sandiway Library. A chance to chat with Ryan about your concerns or pass on information.

## Craft, Garden & Produce Show 2015

The 8th annual Show, to be held on Saturday September 12 2015 is open to all residents and their immediate non-resident family members. There is something for everyone! The committee would be pleased to have entries from children/grandchildren.



### Vegetables & Fruit

To be displayed on a paper plate (supplied).

1. Runner Beans x 5
2. Courgettes x 3
3. Tomatoes x 5
4. Onions x 3
5. Dessert Apples x 3 (can be mixed)
6. Cooking Apples x 3 (can be mixed)
7. Humorous/Odd shaped Veg or Fruit (Any type)
8. Longest runner bean (measured along profile)
9. Display of 5 pieces of mixed fruit &/or veg
10. Vase fresh herbs (min 3 types)  
(arranged for appearance; listed)
11. 1 Veg, 1 Fruit, 1 Flower (arranged for appearance and quality)

### Flowers/Plants

Cut flower vases provided.

12. 1 Foliage potplant (house or garden pot n/e 8"/20cm)
13. 1 Flowering potplant pot n/e 8" /20cm
14. Cactus and/or Succulent in a pot
15. Vase 5 Dahlias
16. Vase 5 Roses
17. Vase Annuals (can be mixed)
18. Vase Herbaceous Perennials (can be mixed) can include shrubs)
19. Single Rose Stem/Single Bloom
20. Single Rose Stem/Multi-Bloomed
21. Planted patio pot, summer flowering pot,  
n/e 14"/36cm diameter (planted by exhibitor)

### Floral Art (Arrangements must not exceed space)

22. Fresh Flower Arrangement 'Summer'  
space n/e 46cm x 46cm/18"x18"
23. Fresh Flower Arrangement in a wine glass  
space n/e 21cm x 21cm/8"x 8"
24. A Fresh Arrangement (foliage and berries)  
NO Flowers space n/e 46cm x 46cm/18"x18"

### Homecraft

25. 1 Jar Jam (approx. 1lb jar; cellophane top)
26. 1 Mixed Fruit Loaf (2lb tin)
27. 1 Jar Pickled Preserves or Chutney (approx. 1lb jar)
28. 1 Victoria Sandwich Cake (3 eggs) jam filled, no topping  
(Inc. icing/caster sugar) **(Men Only)**

### Handicraft/Hobbies

29. Greetings Card, n/e 6"x8" (15cm x 20cm; no envelope)
30. Specimen of cross-stitch/embroidery/tapestry/beadwork  
(can be from a kit) [please state overall dimensions on entry form]
31. 1 hand knitted item
32. Picture, watercolour (mounted or framed)  
[please state overall dimensions on entry form]
33. Picture, any other medium [not photography]  
(mounted or framed) [please state overall dimensions on entry form]
34. One Action photograph (n/e 6"x8"/15cmx20cm)
35. 1 Humorous photograph (n/e 6"x8"/15cmx20cm)
36. 1 photograph featuring bridge(s) (n/e 6"x8"/15cmx20cm)
37. Black and White photo, any topic (n/e 6"x8"/15cm x 20cm)
38. Any other item of Craft

### Note

- **No** Computer Enhanced photos in Classes 34,35,36,37
- All photographs to be unmounted or unframed.
- Classes 34,35,36,37 will be restricted to two (2) entries, per class, per exhibitor.

In Classes 29-38 inclusive, a special prize will be awarded to the best exhibit by person 16 and under in each class. Age to be stated on all such exhibits. (Age at date of show).

### Junior Section

Age to be stated on all exhibits and **MUST** be child's own work.

#### 3-5 years

39. A picture, any medium.
40. Animal made from plant/vegetable material
41. Colouring official picture

#### 6-9 Years

42. A picture, any medium
43. Colouring official picture
44. Any other item of craft

#### 10-13 Years

45. A picture, any medium
46. A computer enhanced photo any topic  
n/e 6"x 8"/15cm x 20cm
47. Any other item of craft



## Community Groups

### Mah Jongg

The North Wind yields to the warm breath of the South Wind & auspicious spring flowers emerge. Experience for yourself the delights Mah Jongg that has been a source entertainment and intrigue for generations.

You will be most welcome so meet us in the lounge bar on the 2<sup>nd</sup> and or the last Thursday of the month at 1.30pm. Enjoy the game with friends and be refreshed with a cup Tea or coffee. No previous experience needed and personal guidance is given.

Phone 889410, or e-mail [mahjongg@delamerepark.co.uk](mailto:mahjongg@delamerepark.co.uk), to book a game or just turn up on the day to watch and learn.

Forth coming meetings are: April 9 and 30, May 14 and 28, June 11 and 25

Looking forward to seeing you

---

### Bridge Club

We have seen a small but welcome increase in numbers, and would certainly welcome more players. We play Rubber Bridge (having never had enough members to play Duplicate!). There are no membership or attendance fees. If you could swell our numbers, please contact Paul Rogers on 889728, or just turn up at one of our meetings.

We meet on Monday evenings at 7.00 p.m. in the Park Room (when available), or in the Lodge.

---

### Gardening Club

Hello all.

Now it's time to go yellow as the daffodils carpet the ground. It must be getting warmer and nearly Summer because Monty Don is back with Gardeners World.

The first rose of the year is in full flower, the lenten rose (Hellebore) that is and soon it will be the turn of the colourful tulips and all the green shrubs and flowers.

Indoors we have our amaryllis and forced hyacinths giving off their heady perfume. Then Spring and Summer and all is in full swing for another gardening year.

Our seeds will be requiring sowing into seed trays in propagators then the gardens as the soil warms up.

At gardening club we will have had our first few meetings of the year. Its still time to join us for another year of meetings @ £8 per member its great value with the discounts for seeds, plants from the various local garden centres. You will soon get your money back and get to some interesting meetings also with guest speakers and our Summer and Christmas parties.

**Give it a try we will be very pleased to have new members. We meet at 8:00pm on the 4th Monday of the month.**

Our guest speakers for the next few months are: **April 27** - we have the head gardener, Mr Glyn Smith from Erdigg Hall, Wrexham to tell us all about these superb gardens which surround the hall. **May 18** - a slightly earlier in the month meeting because of May Bank Holiday Monday. Our speaker is Roger Nutter from the RSPB. If you want to identify any birds which come into your garden then this talk is for you.

Hope to see you at one of our meetings

For further information call Mike McNeal on 882754 or email [mikelin@mmcneal.fsnet.co.uk](mailto:mikelin@mmcneal.fsnet.co.uk).

---

### Rummikub

The Rummikub group continues to meet each Friday in the Clubhouse Bar at 2.00p.m. If you already play, or would like to learn, do come along. There is no charge and sets are available. It would be great to see you!

Contact Pat (888667/07787543488) for further information.

## Community Groups

### Ladies Club

In February, Chairman Janet Wilkinson welcomed members to our AGM, in her report she reminded everyone about the entertaining speakers we had heard during the year and what fun events we had held, including our summer outing to Llangollen and our Christmas party. The Treasurer reported that Ladies' Club had had another successful financial year, it was proposed and accepted to donate £400 to be shared between five charities, most of the money had been raised from the sale of books displayed in the Clubhouse foyer, so many thanks to all residents who have made this possible by donating and purchasing books. Janet thanked the committee for their hard work and especially the three who were retiring, new committee members were elected in their place, but at the AGM we did not have a replacement Treasurer, we are now pleased to report that a volunteer came forward at our March meeting to take over this essential role.

March was enrolment night and the start of a brand new programme. Our speaker Jean Finney's subject, 'The Origin of Nursery Rhymes'. She began by singing an amusing song she had written, 'I'm Confused', with everyone joining in the chorus. Jean then went on to explain there were four categories for rhymes, 'Random', 'Historical', 'Cryptic' and 'Winners and Losers (we know what you did and it was rubbish)'. The rhyme 'Hey Diddle Diddle' was a random rhyme originating from the Macclesfield area and was about four local pubs, the most famous being the Cat & Fiddle in Derbyshire. Historical rhymes such as 'Mary, Mary, Quite Contrary' and 'Three Blind Mice' originated from tales about religious persecution, 'Humpty Dumpty' and 'The Grand Old Duke of York' were about battles and 'Oranges and Lemons' came from public executions. The background for all these was quite shocking and certainly not for the ears of children but none the less very fascinating to learn about.

We meet on the 2nd Monday of each month at 8pm in the Park Room and our speakers for the next 3 months are as follows:

<b>Apr 13</b>	Spring Flower Arrangements	~ <i>Black Cat Floral Design</i>
<b>May 11</b>	The Pankhursts, were they radical crusaders or manipulative troublemakers?	~ <i>Ann Beswick</i>
<b>Jun 8</b>	House of Colour – colour analysis and Kettlewell Garments	~ <i>Sylvia Thompson</i>

New members and guests are most welcome, please come along to share in our meeting, finishing off the evening with a cup of tea and a chat.

**If you would like further information please contact Janet Wilkinson on 889305 or email:**  
**[ladies@delamerepark.co.uk](mailto:ladies@delamerepark.co.uk)**

---

### Squirrels Pre School Nursery

Dedicated care and excellent education in a fun, happy and safe environment. Squirrels is a small Ofsted inspected Pre-School offering places to children from 2 to school age during term time.

**If you would like more information please pop in or call Della or Romany on 01606 888782 or email**  
**[squirrels@delamerepark.co.uk](mailto:squirrels@delamerepark.co.uk)**

---

### 39/45 Club

We held our Annual Dance on Friday February 6 when 45 members travelled by coach to Sandiway Golf Club where Chairman John Seacombe welcomed everyone. During the evening, entertainment was provided by Barry Jay, magician and singer, with the return to Delamere Park about midnight, a good evening was had by all.

Our speaker for February was our own member, Barry Bird who gave a talk with slides of his work in Iraq in the 1970's involving the laying of power cables throughout the length of the country whilst employed with BICC, it was very interesting, needless to say the slides portrayed a far different Iraq than we see portrayed on television.

On a sadder note, our oldest and one of the longest serving members of 39-45 John Halfpenney passed away at "Red Walls" Nursing Home, Sandiway on February 7, he was 95 years of age.

A memorial service was held at St John's Norley when just over 100 people, mainly from Delamere Park attended, his oldest daughter Marian gave us a background of John's life, his early life in London and his eventual involvement in education and the Church, this was followed by further tributes from Robert Woodburn, a lay preacher from St Lukes, Poulton, Wirral. where John worshipped for many years prior to moving to Delamere Park. We on Delamere Park recall that John was avidly involved in most aspects of Park life, namely, 39-45, gardening club, outings, whist, bridge, the choir, pool and was a past holder of the "Fitzsimmons" trophy for services to Delamere Park. He will be sadly missed.

In March, our speaker was Anne Touray who gave a talk on her life and experiences working in the NHS.

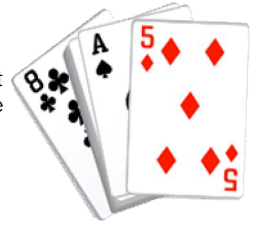
**For more information email [3945@delamerepark.co.uk](mailto:3945@delamerepark.co.uk) or contact Reception.**



## Community Groups

### Whist Drive

Whist Drives are light hearted and are held monthly in the Park Room. We start at 19:30 and finish at 22:45 and the cost is £2. All residents are most welcome. Don't forget that to join you don't have to be a twosome, singletons are very welcome.



**Dates for the coming months are:** April 11 and May 9

**Refer to the notice in the Clubhouse for any date changes or contact John Pattison on 888362**

Whist is an easy game to play and we like to think of it as an adult social evening rather than anything too serious. We are a friendly bunch.

If you are interested and would like more information feel free to contact either **John or Helen on 01606 888362.**

### Delamere Park Singers

We have three new members and welcome Christine, Margaret and Sue. Our latest set of songs include Oklahoma, In the Mood, Scarborough Fair, Younger Than Springtime and we are looking forward to singing these at two concerts arranged for the end of April.



Whilst not wishing to appear discriminatory in any way – **could we appeal for a few more men to come and join us.** Our two gallant and stalwart gentlemen, Mike and Doug are sadly in the minority and would very much appreciate more support from all the chaps on Delamere Park.

**So gentlemen, come and sing, we know you can.**

**See you on a Wednesday mornings, 10.30am – 11.30am in the Park Room. £3 a session.**

For further information, please contact Barbara Smith, 888844.

### Homewatch

Recently there was an attempted break in at a residents garage. With the onset of better weather it is timely to remind residents to be more vigilant and not to leave windows and doors open/ajar even though you maybe in the vicinity.



There have been a large number of vehicles seized by police over the past couple of weeks for not having tax. Please note that whilst vehicles no longer need to display a tax disc, it must still be taxed. Also, if you buy/sell a vehicle, the tax no longer transfers to the new owner! It is automatically refunded to the seller – the new owner must buy tax straight away.

A reminder that Photocard driving licenses **MUST** be renewed every 10 years. Please keep your vehicle documents up to date – as things become more and more automated, fines and prosecutions can be commenced without drivers even being stopped by the police.

### Contact Numbers

To report a scam please contact **[www.actionfraud.police.uk](http://www.actionfraud.police.uk)** or call **0300 123 2040**

To report serious incidents such as where a persons safety may be endangered call **999**

To report a crime call **101** this is handled by the Cheshire Police call centre which is open 24 hours a day

To report a crime anonymously call Crimestoppers on **0800 555 111**

To report non urgent matters call the Community Action Team on **0845 458 6393**

To report Rogue Traders to consumer direct, to report a problem/advice **08454 040506**

To contact your local police station at Frodsham call **01244 612545**

To contact your local Homewatch co-ordinator David Bowker at [homewatch@delamerepark.co.uk](mailto:homewatch@delamerepark.co.uk)

To contact your local PCSO email [ryan.reid21364@cheshire.pnn.police.uk](mailto:ryan.reid21364@cheshire.pnn.police.uk)

# Sports Clubs

## Exercise Classes

### Pure Stretch - Trainer Emma Dart

This class which takes place on **Mondays at 09:30** and has the following aims:

- To releases muscular tension
- To develop core strength
- To reduces mental and physical fatigue
- To be suitable for everyone
- Easy to follow
- Sociable and light hearted



### Circuits - Trainer Emma Dart

**Mondays 6.00pm till 7.00pm**

**Thursdays 11:30 till 12:15 - NEW**

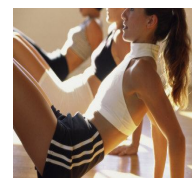
This class is aimed at anyone and everyone and will be a blend of movement, resistance, toning, core work and stretching. A 45 minute session that will help keep you active, strong, supple and fit.

It is non prescriptive, therefore something I can adapt to injury or ability. It will be designed to allow you to work at your own pace, but at the same time allowing you to make improvements to your overall fitness.

**Thursdays 6.00pm till 7.00pm**

Contacts for more information: Emma Dart on 07971 596529.

Jeff Prest at [jeffsandra@btinternet.com](mailto:jeffsandra@btinternet.com) or call 01606 888674.



## Water Aerobics

Anyone new to the group will be most welcome, bring a pair of cotton trainer socks as sometimes the bottom of the pool can be quite slippery. Cost is £2 per person per session all of which is donated to St Lukes Hospice, Winsford. On March 6 we donated a further £173. 83p.

For further details of the classes please contact Reception or email [water@delamerepark.co.uk](mailto:water@delamerepark.co.uk)



## Ju Jitsu

If you are interested in starting JuJitsu, the club run a kids and adults class every Wednesday in the Clubhouse. Juniors 7-16yrs (7-8:30pm), Seniors 16+ (8:30-9:45pm), all levels of fitness welcome and no previous experience is required. Find out more at [www.bsmaa.co.uk](http://www.bsmaa.co.uk)

For further information please see the Notice Board in the Clubhouse or email: [jujitsu@delamerepark.co.uk](mailto:jujitsu@delamerepark.co.uk)



# park dates

Delamere Park community events timetable



April 2015

## Special Events


Regular Meetings and Activities  Community Groups	Normally meet each month on the day(s) shown below  Changes/Cancellations may occur due to Bank Holidays or other factors such as the venue being unavailable	Time	Week Numbers				
			1	2	3	4	5
			Dates in each Week				
39/45	Third Wednesday	19:30	-	-	15	-	-
Band	Every Thursday in the Squirrels	20:00	2	9	16	23	30
Bridge	Every Monday — Lodge 19:00 or Clubhouse 19:15		-	-	13	20	27
Coffee Mornings	First Thursday	10:30	2	-	-	-	-
Gardening Club	Fourth Monday	20:00	-	-	-	-	27
Ladies Club	Second Monday	20:00	-	-	13	-	-
Mah Jongg	Second and Last Thursday	13:30	-	9	-	-	30
Rummikub	Every Friday	14:00	-	10	17	24	-
Singers	Every Wednesday	10:30	1	8	15	22	29
Social — Plot Draw	Every Tuesday	20:30	-	7	14	21	28
Social — Quiz Night	Every Wednesday	20:30	1	8	15	22	29
Whist	Usually first or second Saturday	19:30	-	11	-	-	-
Yoga	Every Tuesday <b>Term Time Only</b>	13:15	-	7	14	21	28
Youth Club	Every Friday	19:30	-	-	-	24	-
<b>Sports Clubs</b>							
Adult Swimming	Every Wednesday	20:00	1	8	15	22	29
Children's Swimming Lessons	Every Saturday <b>Term Time Only</b>	13:30	-	11	18	25	-
Exercise Classes - Pure Stretch	Every Monday	09:30	-	-	-	20	27
Exercise Classes - Circuit Training	Every Monday	17:45	-	-	-	20	27
Exercise Classes - Circuit Training	Every Thursday	11:30	-	-	16	23	30
Exercise Classes - Circuit Training	Every Thursday	18:00	-	-	16	23	30
Indoor Bowls	Every Tuesday	20:00	-	7	14	21	28
Ju Jitsu	Every Wednesday	19:00	1	8	15	22	29
Squash-Mens Team	Every Thursday <b>) Winter</b>	19:00	2	9	16	23	30
Squash- Ladies Team	Every Monday <b>) Only</b>	19:00	-	-	13	20	27
Squash-Junior Coaching	Every Sunday	16:45	-	5	12	19	26
Squash-Social	Second Tuesday in the Month	19:00	-	-	14	-	-
Table Tennis	Every Tuesday	18:00	-	7	14	21	28
Water Aerobics	Every Wednesday	11:00	1	8	15	22	29
Water-Aerobics	Every Thursday	20:00	2	9	16	23	30

# park dates

Delamere Park community events timetable



May 2015

## Special Events


Regular Meetings and Activities	Normally meet each month on the day(s) shown below	Time	Week Numbers				
			1	2	3	4	5
			Dates in each Week				
<b>Community Groups</b>							
39/45	Third Wednesday	19:30	-	-	-	20	-
Band	Every Thursday in the Squirrels	20:00	-	7	14	21	28
Bridge	Every Monday — Lodge 19:00 or Clubhouse 19:15		-	4	11	18	25
Coffee Morning	First Thursday	10:30	-	7	-	-	-
Gardening Club	Fourth Monday	20:00	-	-	-	18	-
Ladies Club	Second Monday	20:00	-	-	11	-	-
Mah Jongg	Second and Last Thursday	13:30	-		14	-	28
Rummikub	Every Friday	14:00	1	8	15	22	29
Singers	Every Wednesday	10:30	-	6	13	20	27
Social — Plot Draw	Every Tuesday	19:30	-	5	12	19	26
Social — Quiz Night	Every Wednesday	19:30	-	6	13	20	27
Whist	Usually first or second Saturday	19:30	-	9	-	-	-
Yoga	Every Tuesday <b>Term Time Only</b>	13:15	-	5	12	19	26
Youth Club	Every Friday	19:30	1	8	15	22	-
<b>Sports Clubs</b>							
Adult Swimming	Every Wednesday	20:00	-	6	13	20	27
Children's Swimming Lessons	Every Saturday <b>Term Time Only</b>	13:30	2	9	16	23	30
Exercise Classes - Pure Stretch	Every Monday	09:30	-	-	11	18	-
Exercise Classes - Circuit Training	Every Monday	17:45	-	4	11	18	25
Exercise Classes - Circuit Training	Every Thursday	11:30	-	7	14	21	28
Exercise Classes - Circuit Training	Every Thursday	18:00	-	7	14	21	28
Indoor Bowls	Every Tuesday	20:00	-	5	12	19	26
Ju Jitsu	Every Wednesday	19:00	-	6	13	20	27
Squash-Mens Team	Every Thursday <b>) Winter</b>	19:00	-	-	-	-	-
Squash- Ladies Team	Every Monday <b>) Only</b>	19:00	-	-	-	-	-
Squash-Junior Coaching	Every Sunday	19:00	3	10	17	24	31
Squash-Social	Second Tuesday in the Month	19:00	-	-	12	-	-
Table Tennis	Every Tuesday	18:00	-	5	12	19	26
Water Aerobics	Every Wednesday	11:00	-	6	13	20	27
Water-Aerobics	Every Thursday	20:00	-	7	14	21	28